

How to configure Windows Vista and Windows 7 with 802.1X

This guide explains how to configure Windows Vista and Windows 7 for use with the encrypted wireless network at Amrita University

FYI: Manufacturers often adapters are bundled with management software. It's recommended that you disable this software and use Microsoft's built-in configuration tool instead. To enable Microsoft's built-in configuration tool to take precedence over 3rd party wireless control software, follow these steps:

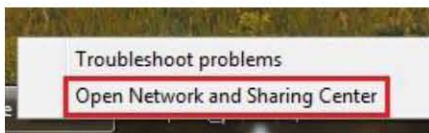
- Click **Start > Run**, then type: `%SystemRoot%\system32\services.msc /s` and click **OK**.
- Scroll down and double-click **Wireless Zero Configuration**.
- In the Startup type list, select **Automatic**, and then click **Apply**.
- In the Service status area, click **Start**, and click **OK**.

How to configure the wireless adapter:

1. Right-click mouse button on the wireless network icon in the taskbar (bottom right on the desktop). Select **Open Network and Sharing Center**:

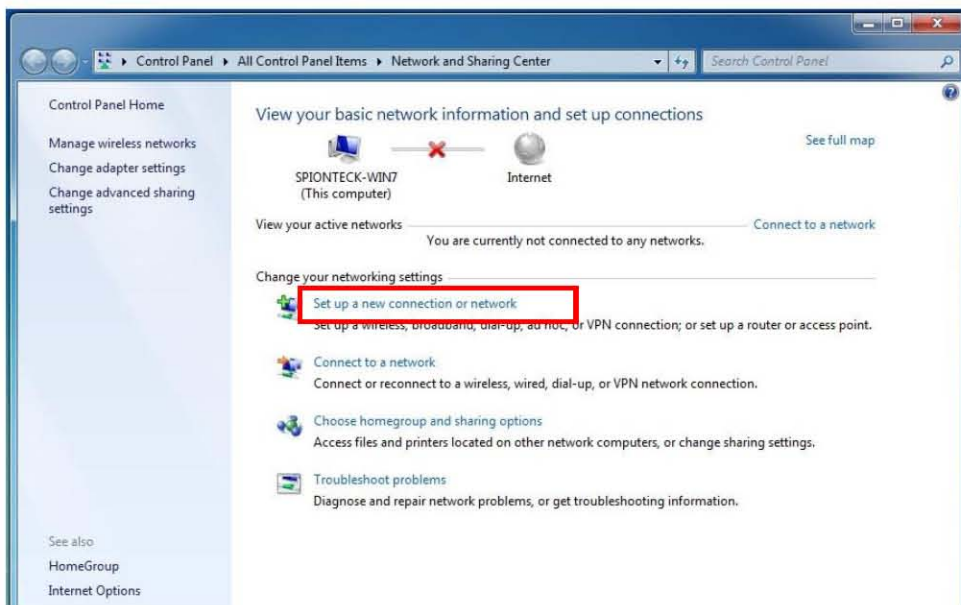


You can also find your network connections in:

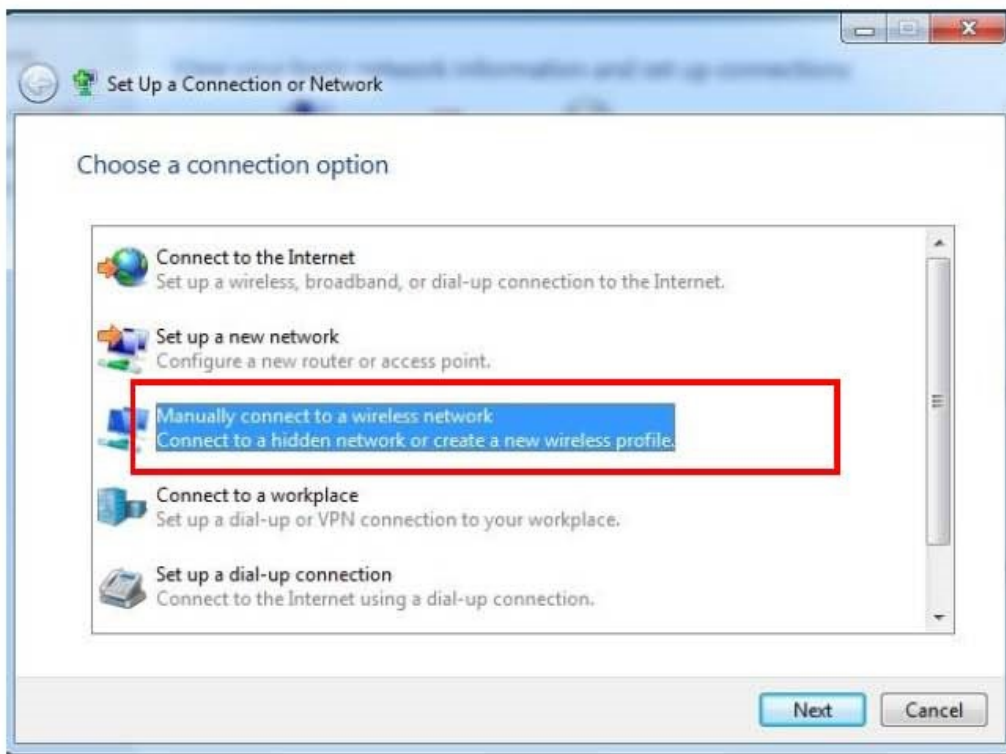


Start -> Control Panel -> Network and Internet -> Network and Sharing Center

2. The following pop-up box should emerge:

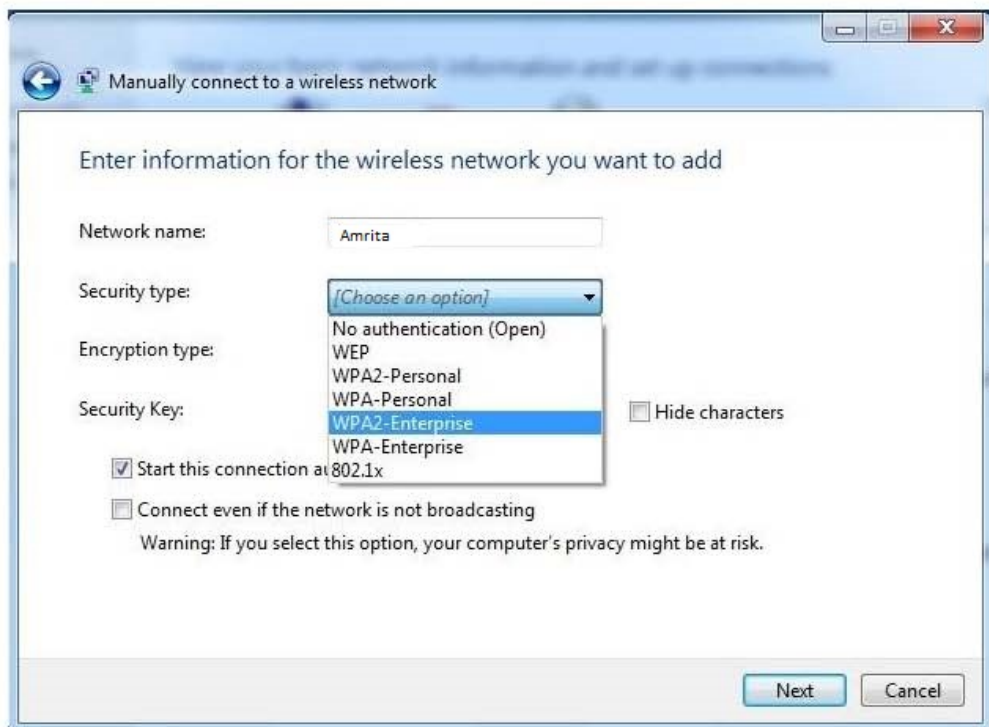


3. Select **Manually connect to a wireless network**



4. The Amrita University wireless network supports both WPA-Enterprise and WPA2-Enterprise

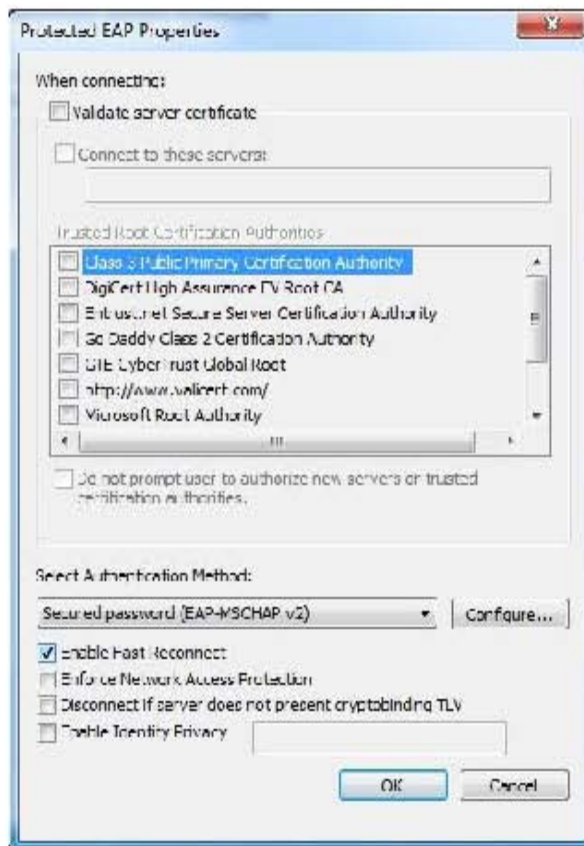
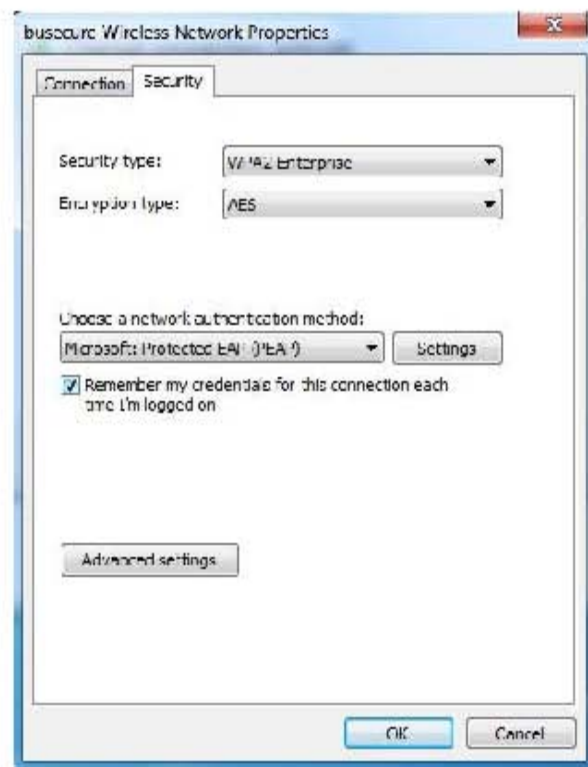
Network name: Amrita. Then select Security type: WPA2-Enterprise



5. Click **Next**
6. Click **Change connection settings**

→ **Change connection settings**
Open the connection properties so that I can change the settings.

7. Make sure Security type is **WPA- Enterprise** or **WPA2-Enterprise**.
 - Encryption type can be either **AES** or **TKIP**
 - Network authentication method: **Microsoft: Protected EAP (PEAP)**
8. Click **Settings**

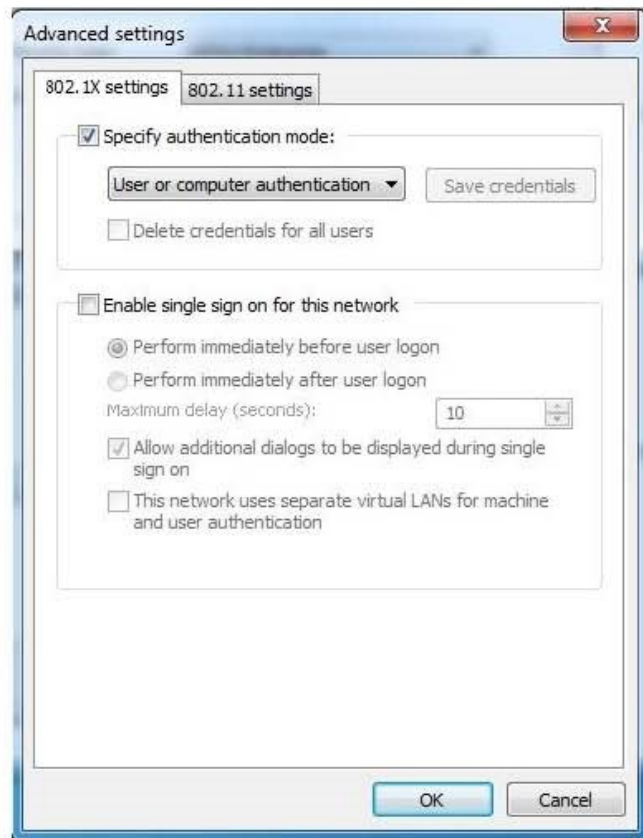


9. You should disable the box marked **Validate server certificate**
10. Select Authentication Method: **Secured Password (EAP-MSCHAP v2)**.
11. You can also check the box for **Enable Fast Reconnect**.
12. Click **Configure**
13. **Uncheck** Automatically use my Windows logon name and password
14. Click **OK**



15. Then select **Advanced Settings**

16. Check the **Specify Authentication Mode** box
17. Select **User or Computer Authentication**
18. Click **OK**
19. Then click ok in the next window as well and you will be set up to connect to **Amrita**



Log in



1. Click on the **Wireless** icon
2. Choose **Amrita** and click **Connect**
3. Enter your **username** and **password**
4. Click **OK**

